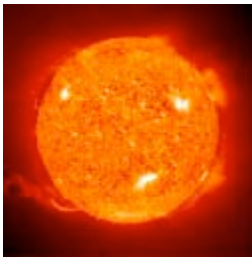


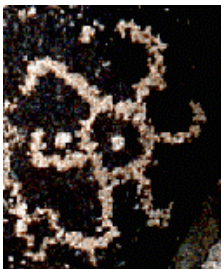
Sun - Moon Symbols

Project Description:



The assignment is to brainstorm and create several ideas for making a symbol for the sun and for the moon. The best of these will be carried out as a final painted product, either a sun or a moon, and presented within a frame of mat board backed with foam core.

A symbol is an image that represents an idea and is more general and universal than a picture or photo. The sun and the moon have been popular subjects for image making through the centuries, yet they still offer the possibilities of new and creative interpretations. Think about how you feel in relation to them and what aspects make them important to you. Make your imagery personal, yet universal, in that anyone looking at them will know immediately what you are symbolizing. Avoid using cliches, see page 162 of your text.



Compare the two sun images at left. The top one is a photo by NASA and the bottom one is a petroglyph from Painted Rock, Arizona. Both have visual features in common -- a round central shape with curved rays (solar flares) extending from the center. These solar flares would not have been visible to the artist who made the petroglyph centuries ago. They represent the energy from the sun. What other ideas can be used to represent the sun and its characteristics?

Next, consider the two moon images at the right. The top one is a photo by NASA and the bottom one is a moon symbol by VSU student Rebecca Walker. The moon is often represented in a round or crescent shape.



What aspects of the moon come to mind based on your personal experience?

Consider a design that balances the design concepts of both variety and unity. Variety may be achieved by using different shapes, sizes, colors, and subject matter. Unity is produced through repetition of shapes, textures, and colors. Work to obtain both interest and cohesion. Consider the gestalt of the piece -- the whole is more important than the sum of its parts. It is often best to adjust, even compromise, the details to better serve the total composition.



Guidelines:

Begin the design process by making 5 pencil thumbnails for each the sun and the moon (10 total) in your handmade book. Square or rectangular compositions are acceptable. Use shading to present the painted values (3 to 4 total, see next paragraph). Choose your best design to translate into the painted project.

The symbol you wish to present for grading must be painted in gouache on Bristol paper using black, white, and one or two chosen colors. Consider using a hue(s) that enhances the projected meaning of the piece. The paint must be applied in flat, even color with no gradation or transparency. The paper size should be a minimum of 8.5" in each direction, allowing for a 1/4" overlap of mat board on all sides. The design itself will thus be a minimum of 8" in each direction, and can be a square or rectangular composition. Plan to carry the paint all of the way out to the edges of the paper, beyond the design area, but allow for the 1/4" of cropping (see cartoon layout).

Presentation:

The final design must be matted for a clean, professional look. Use black matboard and white foam core.

The design area for each work must have a minimum of 8" showing in each direction. Slice matboard windows with a bevel cut and overlap the artwork at least 1/4" around the edges. Make the mat borders 2" on all sides.

The assignment directions and must be taped to the back of the foam core. Write your name on the back as well.

